

22th GBIF MADAGASCAR

October 07th, 2015

« BIODIVERSITE AU SERVICE DE
DEVELOPPEMENT »

Centre de Conférence International Ivato
Antananarivo - MADAGASCAR

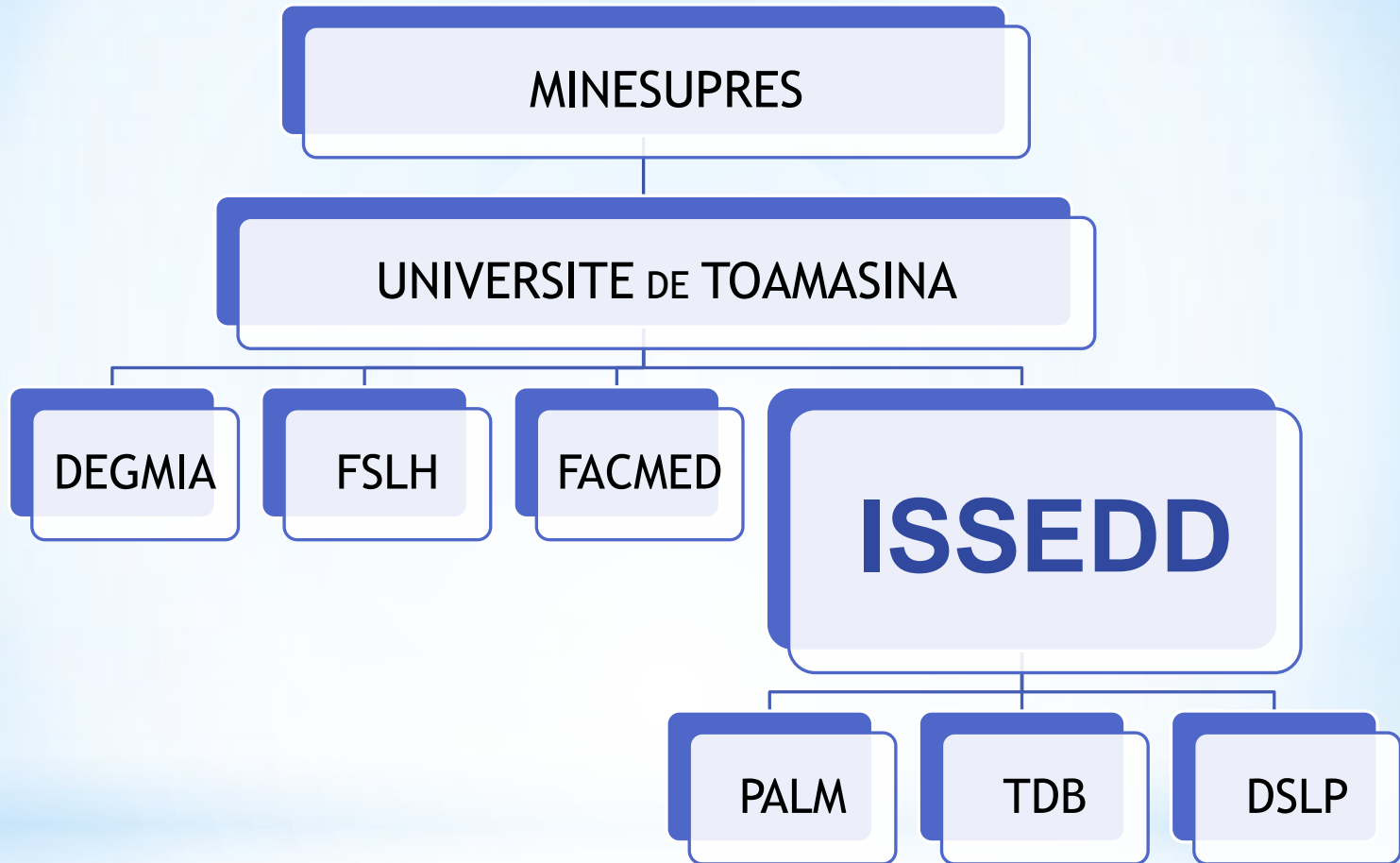
ISSEDD

UNIVERSITE DE TOAMASINA - Madagascar

TRAINING IN SUSTAINABLE DEVELOPMENT AND MANAGEMENT OF BIODIVERSITY IN MADAGASCAR

Dr. Eustache MAVINTA, *MIASA*, *Dr. Andry RAKOTOMAVO*, *Mr. Christian BEZANDRY*,
Mme Brigitte Annie

ISSEDD



*WHO WE ARE?

*Public High school for sciences,
environment and sustainable development
at the Universite de Toamasina-
MADAGASCAR

*References: Arrêté n° 31502/2013-
MESupRES du 23 octobre 2015.

***WHO WE ARE?**

- *PALM: Pêches, Aquacultures Littorale et Marine (fishery, coastal and marine aquaculture)
- *TDB: Tourisme Durable et Biodiversité (Sustainable tourism and biodiversity)
- *DSLPP: Développement Social, Local et du Patrimoine (social, local and heritage development)

*Heads by:

✓ Headmaster

✓ Management bodies:

- Collège des Enseignants (teacher colleges),
- Conseil Scientifique (scientific advice),
- Conseil de l'Institut (advice of the institut).

ISSEDD: structure

ISSEDD's vision on sustainable development!

- ***Actions axes,***
- ***Approachs.***

* Integration of conservation and development of Community.

* Training and applied research in sustainable development

* **AXES D' ACTIONS ISSEDD**

- * partenariat avec organismes de recherches nationaux et internationaux en mode 3P (Partenariat Public Privé)
ISSEDD as an academic institution
- * collaboration avec les communautés de base (COBA ou VOI) dans la gestion des ressources naturelles ,

*** DD ET RECHERCHES
SCIENTIFIQUES
APPROCHES**



* SCIENTIFIC RESEARCHS AND
SUSTAINABLE DEVELOPMENT
APPROACHS

ISSEDD

VS

DD PROBLEMATIC

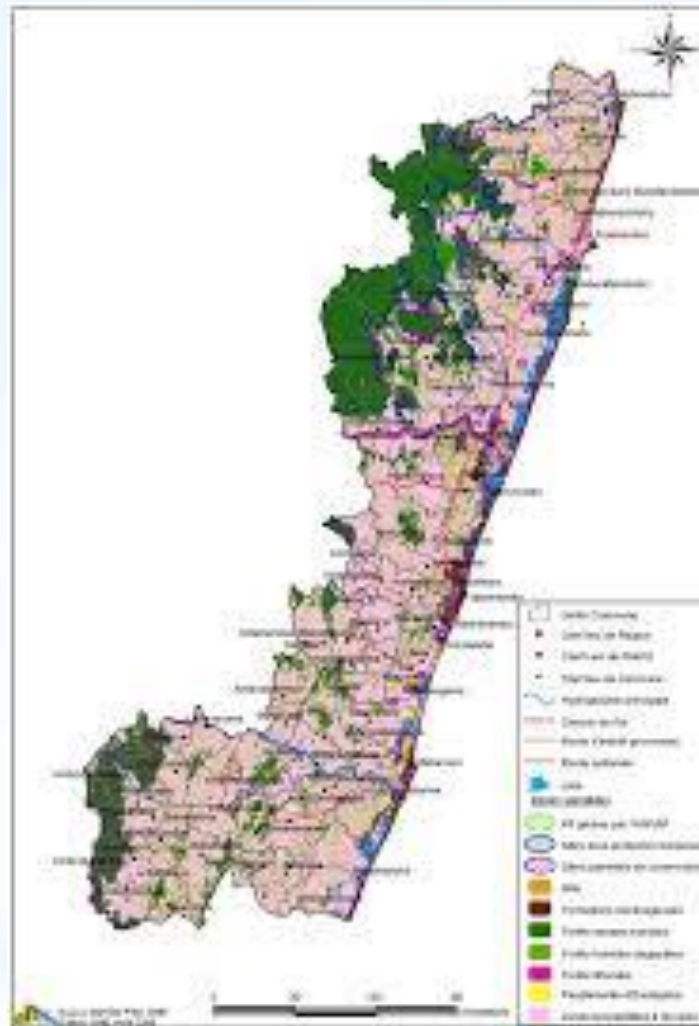
**Anxious to bring his part of work
to achieving SD goals, we active in
the use of our academics strenghts**

*** ISSÉD AU CŒUR DU
DEVELOPPEMENT
DURABLE**

**ISSEDD
and
REGION AT SINANANA
WITHIN 8 YEARS
(2008-2015)**



* **REGION AT SINANANA**
ONE/MO/DOC/38/RSEE/ATS



REGION AT SINANANA occupation de sol (TBE 2008)

 **APPROCHS**

AND

METHODS

RESULTS

• SCIENTIFIQUES

- Communications
- Publications
- Participations a des manifestations internationales

- Training of young leaders and technician with solid foundation knowledge on SD

APPROACHS

INCOMES

* LES SORTANTS DE L'ISSEDD:

* Directeur

RESULTS

- PARTENARIALS

- National:
- International:

- Obtaining multimedia room
- Scholarships for students on training and researchs

APPROACHS

INCOMES

* National: Region Antsiranana/ CNRE/ LRI/ MFFG/FORMAPROD/ SPAT/Ambatovy...

* International: Région Basse Normandie/Université de Turin (Italie)/Université de Heldeischem (Allemagne) / Région Haute Normandie / REGION RHONE ALPES / UNION EUROPEENNE / ACP / MADAGASCAR NATIONAL PARK / GREP / OTHERS UNIVERSITY MADAGASCAR/ APDRA

* **PARTENERS**



* ISSEDD multimedia room

- Approches multisectoriels privilégiant le concept de DD donc de dimensions sociale, économique, écologique, culturelle

RESULTAT

- RECHERCHE SUR LES THEME DSLP - TDB - PALM

- Search for SD : direct and indirect involvment of local populations
- Exampels:
- 03 scolar latrines
- 48 family latrines
- 1350 beneficiaries

APPROCHES

INCOME

- ❑ management of faeces and development of resources in pollution
- ❑ Poisoning related to consumption of Marine Animals (ICAM)
- ❑ Carbon availability in some plant ecosystems of the Malagasy East
- ❑ Traditional fish farming "Acadja"
- ❑ Sea and river fisheries
- ❑ extension of fish farming and rice-fish farming in the region.

* RECHERCHE REALISEES

* Circuit

Fermer la boucle entre l'assainissement et l'agriculture



* LES REALISATIONS

Latrine avec récupération
EP



Scolaire



Familiales





CONCLUSION

*Upcoming opening of the Doctoral School turned to the current major global concerns such as climate change, sustainable development, Green Economy, Marine and Coastal Protected Area, Collaborative Research (team research work, partnership with other research institutions, Multidisciplinary)

***PERSPECTIVE 1**

- * Improve ISSEDD environments: creation of natural laboratories (Andobo Antsiraka) and indoor laboratories at LTP Barikadimy

- * assert its national presence in the SD to become a key partner in any intervention.

- * .

* PERSPECTIVE 2

* Laboratoire Pluridisciplinaire de
Barikadimy. * Tel+344998102 -
0320220287 * E-mail: -
issedd@issedd-univ.mg *
miasaeustache@issedd-univ.mg

 **CONTACTS ISSEDD**



ISSEDD

*Institut Supérieur de Sciences,
Environnement et Développement Durable*



Devise : Mahay - Kanty - Sahy (Excellence, Probité, Créativité) Slogan : We train to begin leaders. Not to be followers.

ACCUEIL

ISSEDD

FORMATION

BIBLIOTHÈQUE

VIE ÉTUDIANTE

PARTENAIRES

PROGRAMME D'ÉTUDE

INSCRIPTION

STATUT



Etude en ligne



VIDÉO
ISSEDD



ALBUM ISSEDD
BIBLIOTHÈQUE
EMPLOI DU TEMPS
LOCALISATION

**<< WE TRAIN TO BE LEADER NO TO
BE FOLLOWER >>**

ISSEDD

THANK YOU FOR YOUR

ATTENTION!